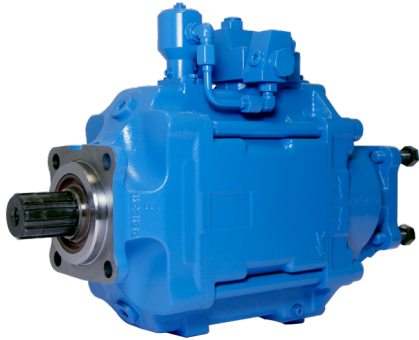


TXV range with constant torque control



- ▶ TXV pumps with constant torque control which ensures regulation to maintain $\text{Pressure} \times \text{Flow} = \text{Constant}$
- ▶ Control device available for the entire range of TXV pumps from 40cc/rev. to 150cc/rev., including the TXV130 model with through shaft
- ▶ Maximum torque between 90 and 700 Nm depending on models
- ▶ Compact size
- ▶ Torque / power adjustment screw
- ▶ Quick response time to increase flow
- ▶ Designed for truck applications, DIN ISO 14 mounting flange
- ▶ Options available : displacement setting screw, LS filter adapter

▶ Technical characteristics :

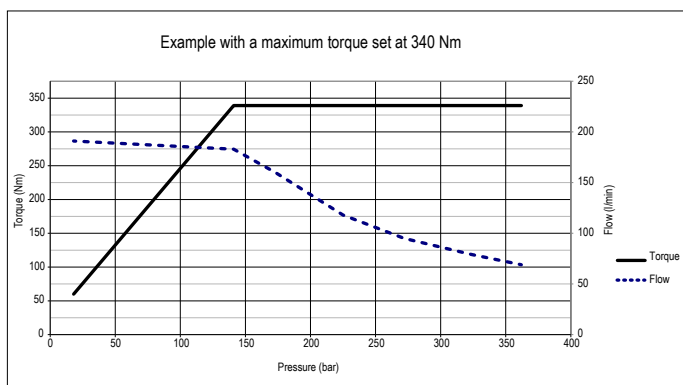
Pump	Reference	Direction of rotation	Max. displacement ⁽¹⁾	Max. operating pressure	Maximum peak pressure (intermittent: 5%)	Max. torque range ⁽³⁾	Max. speed at full displacement ⁽²⁾	Max. speed in stand-by mode	Weight (kg)	Overhang torque (N.m)
			(cc/rev)	(bar)	(bar)	(daN.m)	(rpm)	(rpm)		
TXV 40	P002685	SH	40	400	420	9 to 43.5	3000	3000	25.8	34
	P002686	SIH								
TXV 60	P002673	SH	60	400	420	9 to 43.5	2600	3000	25.8	34
	P002674	SIH								
TXV 75	P002683	SH	75	400	420	9 to 43.5	2000	3000	25.8	34
	P002684	SIH								
TXV 92	P002681	SH	92	400	420	9 to 43.5	1900	3000	25.8	34
	P002682	SIH								
TXV 120	P002441	SH	120	380	400	12 to 56.5	2100	3000	25.8	34
	P002442	SIH								
TXV 130	P002763	SH	130	365	380	13 to 60.5	2100	3000	28	38.6
	P002764	SIH								
TXV 150	P002765	SH	150	310	330	15 to 70	2000	3000	28.2	38.6
	P002766	SIH								
TXV 130 (version arbre traversant)	P002741	SH	130	365	380	13 to 60.5	1900	3000	31.1	47.4
	P002743	SIH								

(1) The pumps can be set for a lower maximum displacement.

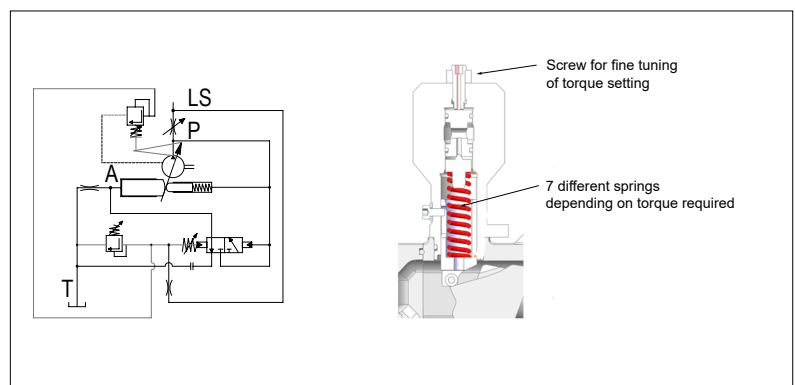
(2) Higher speed possible – at full displacement – depending on flow required : please contact Customer Service.

(3) Required torque setting to be specified on order.

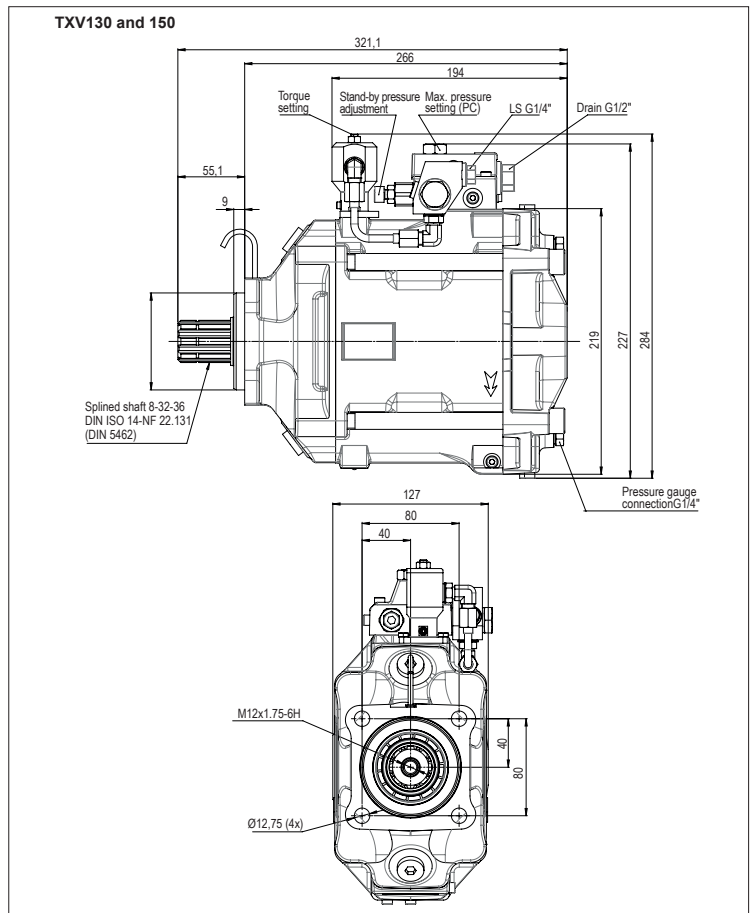
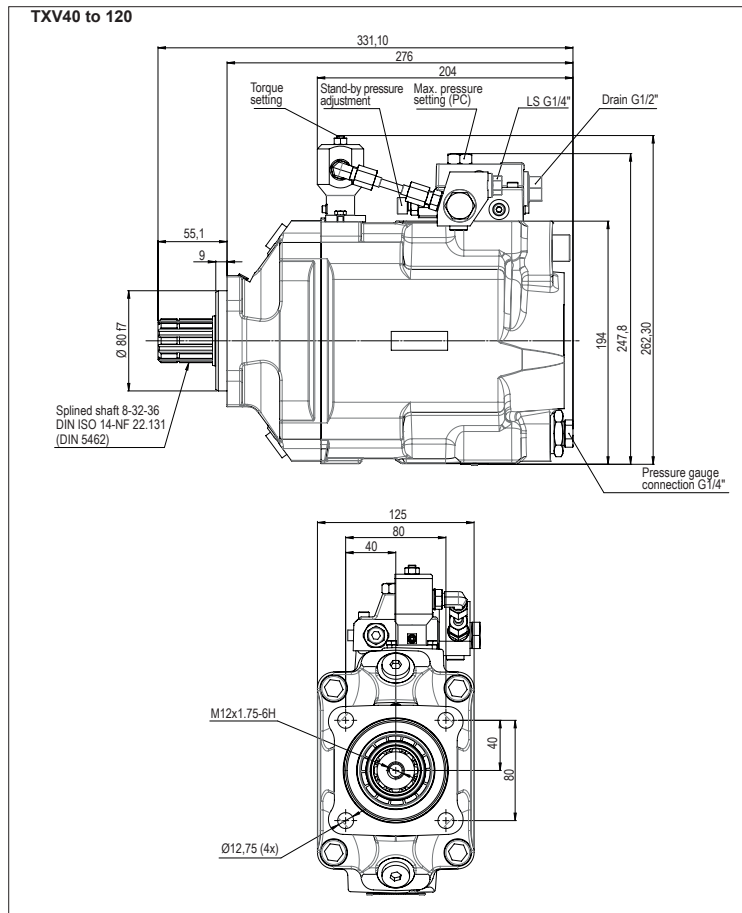
▶ Torque and flow as a function of pressure :



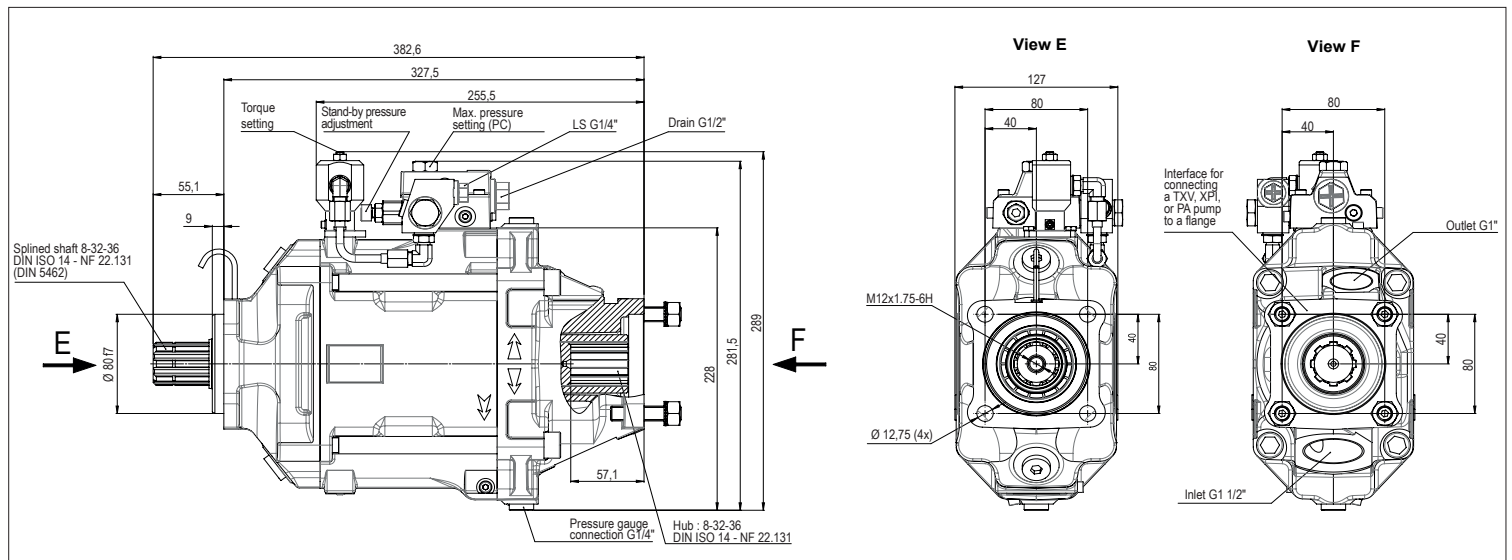
▶ Constant torque control :



► Dimensions of standard pumps :



► Dimensions of the TXV 130 pump with through shaft :



Dimensions in mm [inches] are given only as an indication.

For further information, please contact Customer Service.

Hervé COLIN - tel : +33(0)3 83 76 05 37 - hcolin@hydroleduc.com

HYDRO LEDUC SAS
Siège social & Usine
Head Office and Factory
BP 9
F-54122 AZERAILLES
FRANCE
Tel. +33 (0)3 83 76 77 40
Fax +33 (0)3 83 75 21 58

HYDRO LEDUC GmbH
Am Ziegelplatz 20
D-77746 SCHUTTERWALD
DEUTSCHLAND
Tel. +49 (0) 781-9482590
Fax + 49 (0) 781-9482592

HYDRO LEDUC AB
Betongvägen 11
461 38 TROLLHÄTTAN
SWEDEN
Tel. + 46 (0) 520 10 820

HYDRO LEDUC BV
Ericssonstraat 2
5121 ML Rijen
The Netherlands
Tel. +31 6 202 40 651

HYDRO LEDUC N.A. Inc.
Grand Parkway Industrial Park
23549 Clay Road
KATY, TX 77493
USA
Tel. +1 281 679 9654



www.hydroleduc.com