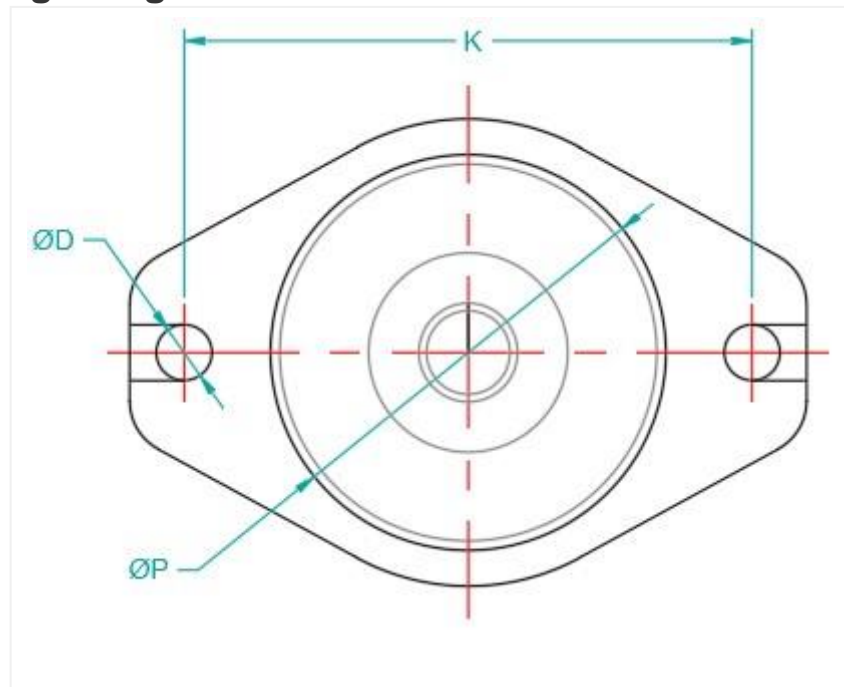


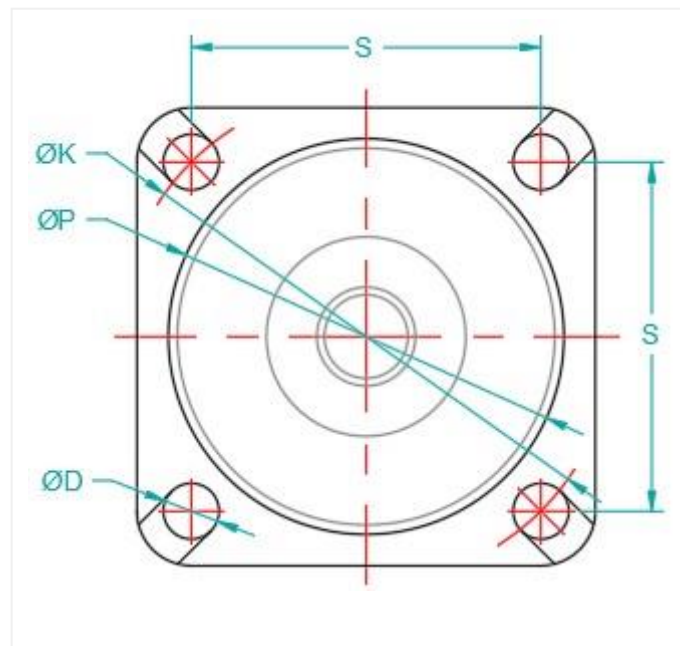
Identifikation af motorflange, pumpeflange og aksel jævnfør SAE J744 og ISO 3019-1

To-huls monteringsflange



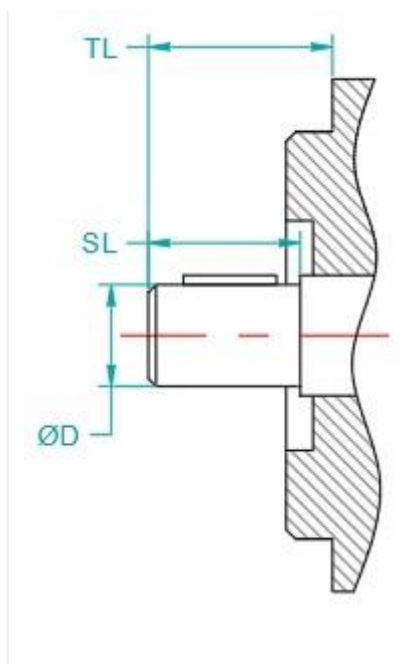
Standard kode	(ØP) Styreflange	(K) Hulafstand	(ØD) Boltehul Ø
SAE AA ISO 50-2	2.00" 50.8 mm	3.25" 82.6 mm	0.406" 10.3 mm
SAE A ISO 82-2	3.25" 82.55 mm	4.187" 106.4 mm	0.437" 11.1 mm
SAE B ISO 101-2	4.00" 101.6 mm	5.75" 146 mm	0.562" 14.3 mm
SAE C ISO 127-2	5.00" 127 mm	7.125" 181 mm	0.687" 17.5 mm
SAE D	6.00"	9.00"	0.812"
ISO 152-2	152.4 mm	228.6 mm	20.6 mm
SAE E ISO 165-2	6.50" 165.1 mm	12.50" 317.5 mm	1.062" 27 mm
SAE F ISO 177-2	7.00" 177.8 mm	13.781" 350 mm	1.062" 27 mm

Fire-huls monteringsflange

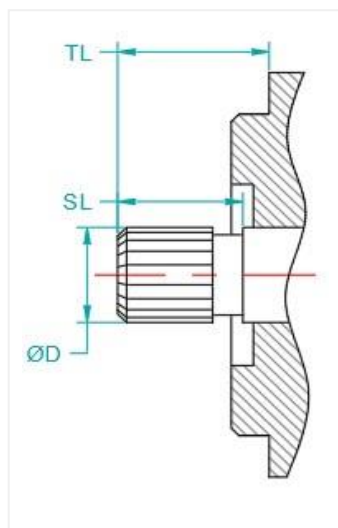


Standard kode	(ØP) Styreflange	(ØK) Delecirkeldiameter	(S) Hulafstand	(ØD) Boltehul Ø
SAE B ISO 101-4	4.00" 101.6 mm	5.00" n/a	n/a 89.8 mm	0.562" 14.3 mm
SAE C ISO 127-4	5.00" 127 mm	6.375" n/a	n/a 114.5 mm	0.562" 14.3 mm
SAE D ISO 152-4	6.00" 152.4 mm	9.00" n/a	n/a 161.6 mm	0.812" 20.6 mm
SAE E ISO 165-4	6.50" 165.1 mm	12.50" n/a	n/a 224.5	0.812" 20.6 mm
SAE F ISO 177-4	7.00" 177.8 mm	13.781" n/a	n/a 247.5	1.062" 27 mm

Cylinderaksel m. not uden gevind



Standard kode	(ØD) Akseldiameter	(SL) Aksellængde	(TL) Totallængde	Not
SAE AA ISO 13-1	0.500" 12.7 mm	0.750" 19 mm	1.062" 27 mm	0.125" 3.18 mm
SAE A ISO 16-1	0.625" 15.88 mm	0.937" 24 mm	1.250" 32 mm	0.156" 3.97 mm
SAE AH ISO 19-1	0.750" 19.05 mm	0.937" 24 mm	1.250" 32 mm	0.187" 4.78 mm
SAE B ISO 22-1	0.875" 22.23 mm	1.312" 33 mm	1.625" 41 mm	0.250" 6.35 mm
SAE BB ISO 25-1	1.000" 25.40 mm	1.500" 38 mm	1.812" 46 mm	0.250" 6.35 mm
SAE C ISO 32-1	1.250" 31.75 mm	1.875" 48 mm	2.187" 56 mm	0.312" 7.94 mm
SAE CC ISO 38-1	1.500" 38.10 mm	2.125" 54 mm	2.437" 62 mm	0.375" 9.53 mm
SAE D ISO 44-1	1.750" 44.45 mm	2.625" 67 mm	2.937" 75 mm	0.437" 11.11 mm
SAE E	1.750"	2.625"	2.937"	0.437"



Splined aksel angrebsvinkel 30°

Standard kode	Spline oplysninger	(ØD) Akseldiameter	(SL) Aksellængde	(TL) Totallængde
SAE AA ISO 13-4	9T 20/40 DP	0.500" 12.7 mm	0.750" 19 mm	1.062" 27 mm
SAE A ISO 16-4	9T 16/32 DP	0.625" 15.88 mm	0.937" 24 mm	1.250" 32 mm
SAE AH ISO 19-4	11T 16/32 DP	0.750" 19.05 mm	0.937" 30 mm	1.250" 38 mm
SAE B ISO 22-4	13T 16/32 DP	0.875" 22.23 mm	1.312" 33 mm	1.625" 41 mm
SAE BB ISO 25-4	15T 16/32 DP	1.000" 25.40 mm	1.500" 38 mm	1.812" 46 mm
SAE C ISO 32-4	14T 12/24 DP	1.250" 31.75 mm	1.875" 48 mm	2.187" 56 mm
SAE CS ISO 35-4	21T 16/32 DP	1.375" 34.93 mm	1.875" 48 mm	2.187" 56 mm
SAE CC ISO 38-4	17T 12/24 DP	1.500" 38.10 mm	2.125" 54 mm	2.437" 62 mm
SAE D, SAE E ISO 44-4	13T 8/16 DP	1.750" 44.45 mm	2.625" 67 mm	2.937" 75 mm
SAE F ISO 50-4	15T 8/16 DP	2.000" 50.80 mm	3.150" 80 mm	3.437" 88 mm