



Spare parts catalogue

Winch
SW 55 JO

DINAMIC OIL S.p.A.

Via Togliatti, 15
41030 Bomporto (MO)
tel +39.059.812611
fax +39.059.812603
dinamicoil@dinamicoil.it

Spare parts catalogue No.

L508

Logbook code

825503003Q

Edition

12/11/2015

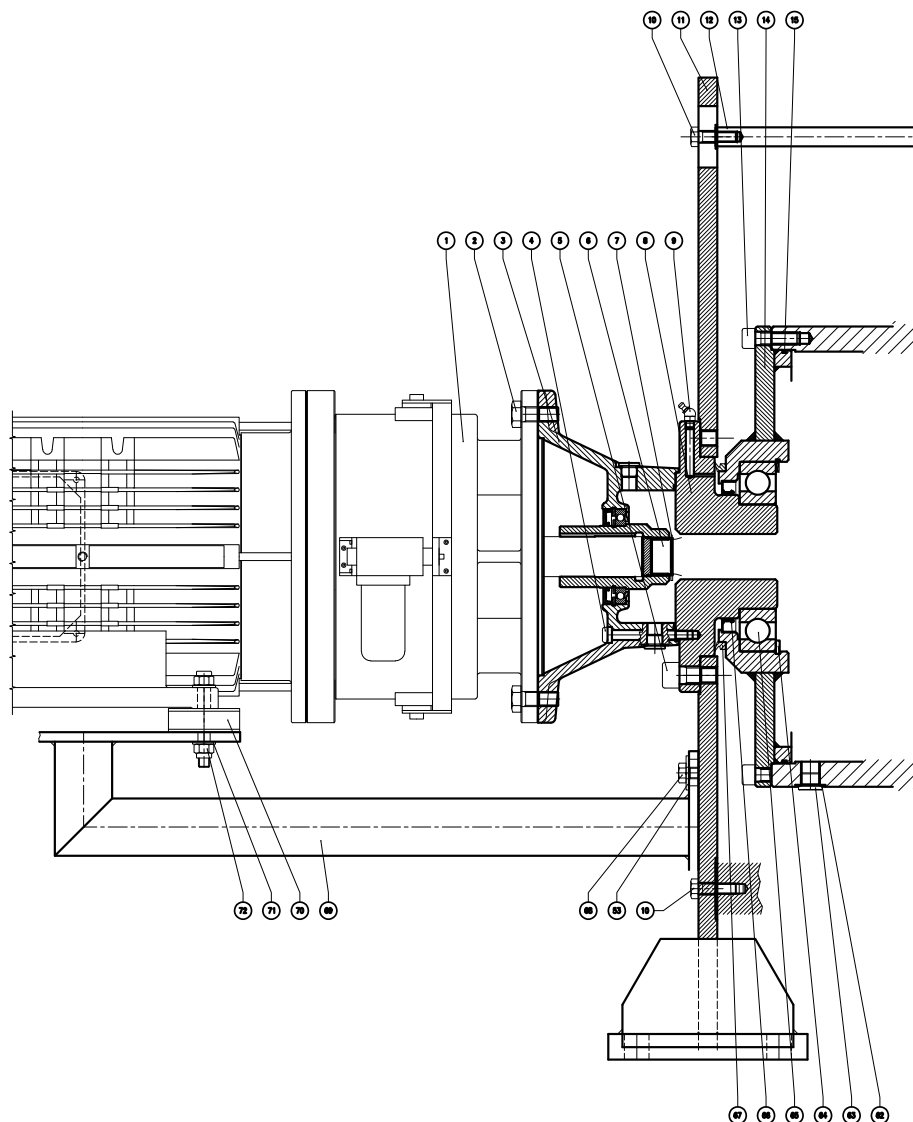
Revision

0

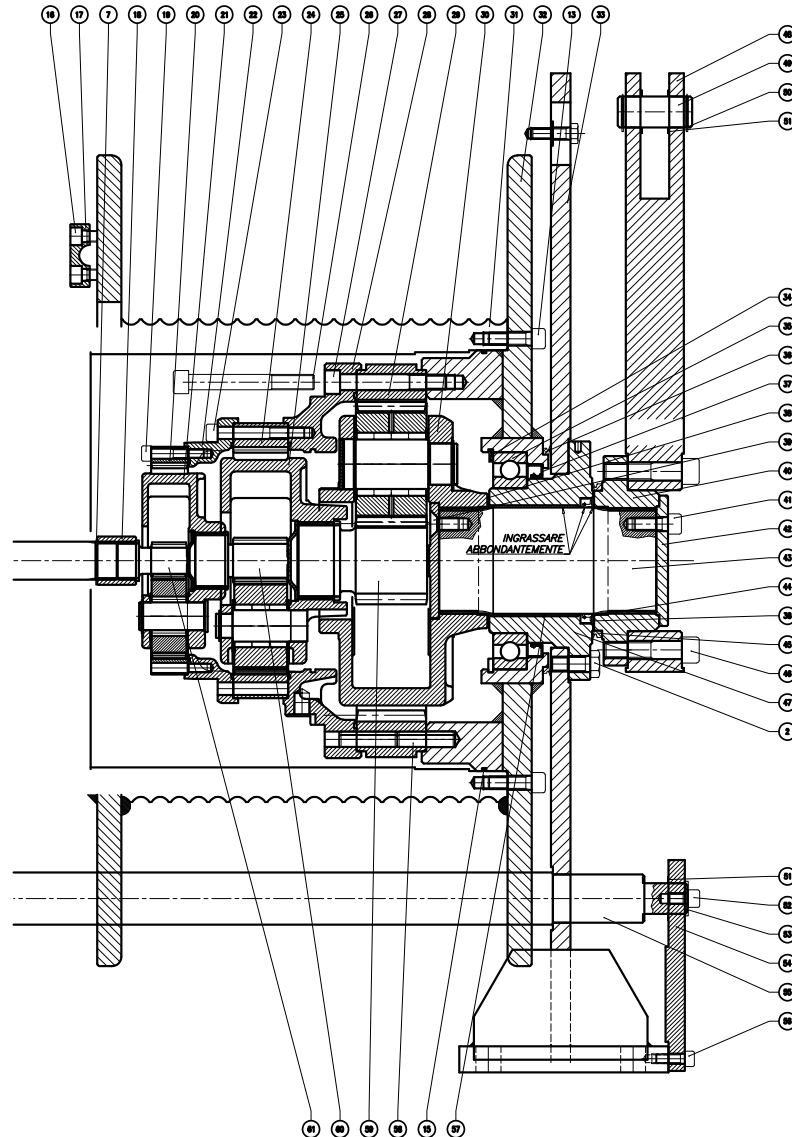


Table index	<i>Winch</i>	SW 55 JO
	<i>Logbook code</i>	825503003Q

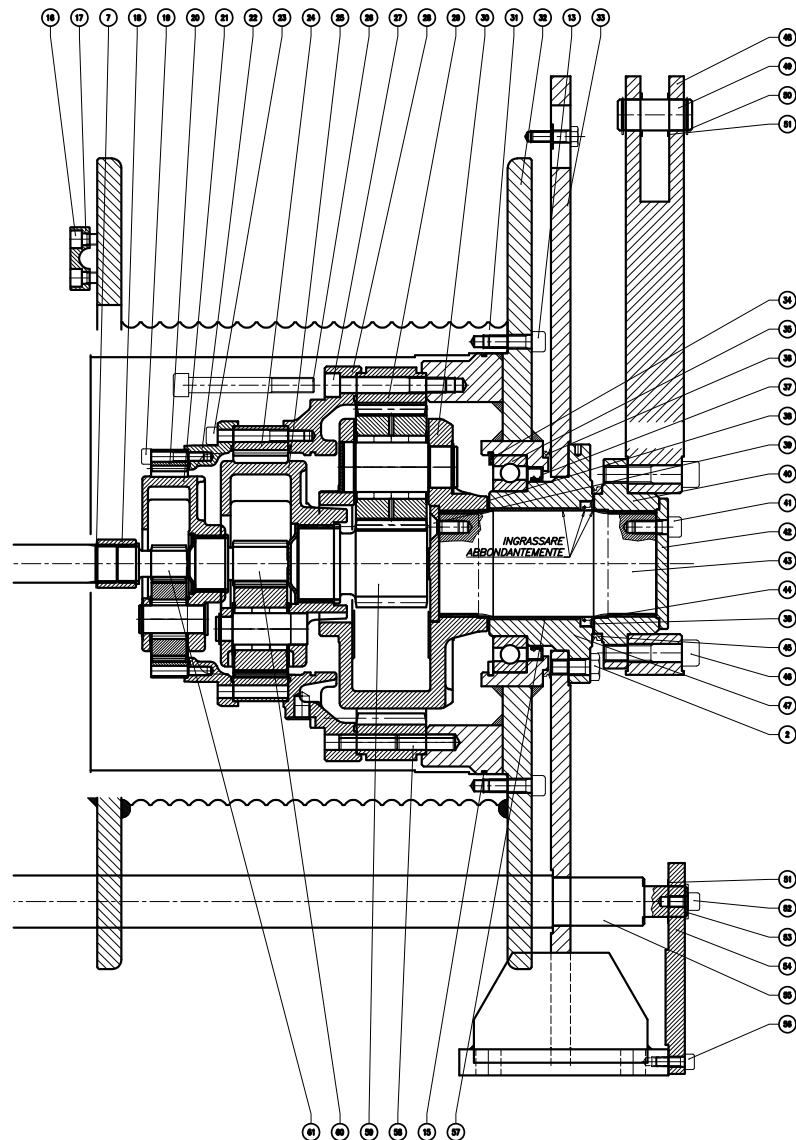
Page	Table code	Table heading
3	825503003Q	WINCH SW55 JO CW LEBUS Ø20
4	825503003Q-1	WINCH SW55 JO CW LEBUS Ø20
5	825503003Q-2	WINCH SW55 JO CW LEBUS Ø20
6	905550100	CABLE PRESS KIT
7	905550100-1	CABLE PRESS KIT
8	905550100-2	CABLE PRESS KIT
9	905000102	MICROSWITCH KIT



Pos	Code	Qty	Description
1	425056000	1	ELECTRIC MOTOR FOR WINCH SW55 JO
2	410416700	14	HEX HEAD CAP SCREW M16X40 10.9 GEOMET 500B
3	K0700AD01	1	ME-160 RE 110/210/240
4	410407800	8	HEX SOCKET HEAD CAP SCREW M10X80 12.9 UNI 5931
5	410416400	8	HEX SOCKET HEAD CAP SCREW M18X40 12.9 GEOMET 500B
6	024410153	1	SHAFT WINCH SW55 JO
7	421000600	2	SHAFT SEEGER Ø40
8	023310163	1	CARRIER FLANGE WINCH SW55 JO
9	429010800	1	LUBRICATOR A 45° 1/8"G
10	410028300	10	HEX HEAD CAP SCREW M12X40 10.9 GEOMET 500B
11	029918171	1	MOTOR SIDE SUPPORT SW55 JO
12	024510463	2	ROUND UPPER RAIL
13	410424700	24	SCREW TCEI M14X45 12.9 GEOMET 500B
14	029911239	1	MOTOR SIDE FLANGE WINCH SW55 JO
15	406026100	2	O-RING 2-282
53	423108600	6	WASHER 12,5X36X3 UNI 6593 INOX A4
62	423000700	4	SOFT COPPER WASHER 1/2" (21X27X2)
63	419000800	4	PLUG 1/2" BSP PLUG DIN 908
64	421103500	1	HOLE SEEGER Ø200
65	400006800	1	BALL BEARING 6222 TYPE B
66	415004000	1	SEAL RING 130X160X15 BASL
67	406061100	1	V-RING NBR VA 180
68	410024800	4	SCREW TE M12X30 10.9 GEOMET 500B
69	029918173	1	ELECTRIC MOTOR SUPPORT WINCH SW55 JO
70	415123700	4	SILENT BLOCK Ø75X25 M12
71	423103900	8	FLAT WASHER Ø12 UNI 1734 SP.3
72	413100300	8	SELF-LOCKING NUT M12 ALTO



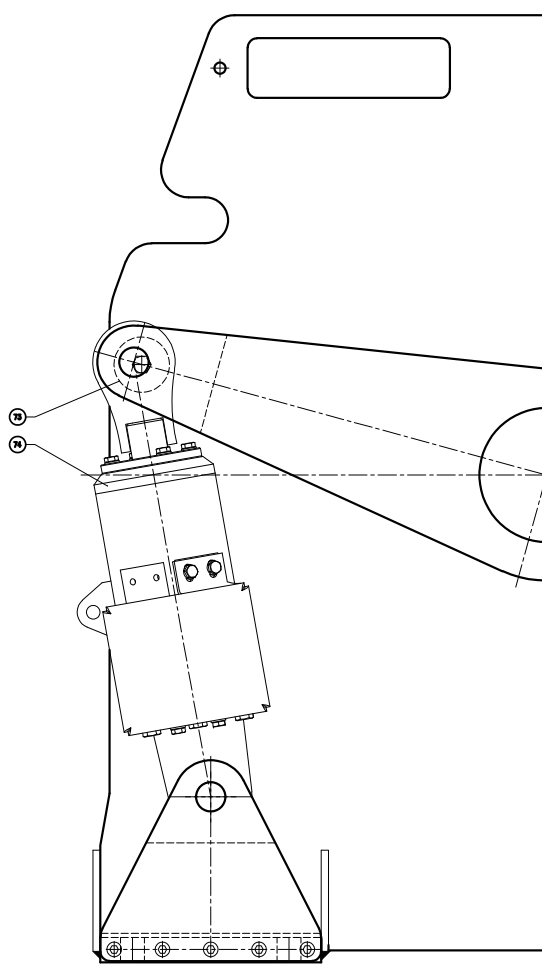
Pos	Code	Qty	Description
2	410416700	14	HEX HEAD CAP SCREW M16X40 10.9 GEOMET 500B
7	421000600	2	SHAFT SEEGER Ø40
13	410424700	24	SCREW TCEI M14X45 12.9 GEOMET 500B
15	406026100	2	O-RING 2-282
16	410414200	6	HEX SOCKET HEAD CAP SCREW M14X35 12.9 GEOMET 500B
17	02411008	3	Ø20 ROPE CLAMP
18	263200600	1	SPLINED COUPLING SW4 - S45
19	410410200	12	HEX SOCKET HEAD CAP SCREW M10X55 12.9 UNI 5931
20	2030030600	1	RING GEAR RE500
21	99121900	1	GEAR SUBASSEMBLY RE 510 7,5 '00
22	02731043	1	INTERMEDIATE FLANGE RE810/1020 PER RE310/5
23	410400100	12	HEX SOCKET HEAD CAP SCREW M12X90 12.9 UNI 5931
24	02231028	1	RING GEAR RE1020
25	99345300	1	GEAR SUBASSEMBLY RE 1020 R1:6.8 VERS.2010
26	410021500	21	TCEI SCREW M16X130 12.9 UNI 5931
27	410408400	3	TCEI SCREW M16X110 12.9 UNI 5931
28	02731047	1	INTERMEDIATE FLANGE RE3000/RE2520 FOR RE1020/810
29	02231015	1	RING GEAR RE2520-3000
30	99523800	1	GEAR SUBASSEMBLY RE2520 R1:5.2
31	029910456	1	Ø19 LEBUS GROOVED DRUM WINCH SW55 JO
32	029912290	1	HUB SIDE FLANGE WINCH SW55 JO
33	029918172	1	HUB SIDE SUPPORT SW 55 JO
34	421107900	1	HOLE SEEGER UNI 7437 Ø225
35	400023300	1	BEARING SPHERICAL 6030 TYPE A
36	406062000	1	V-RING NBR VL 220
37	415013200	1	SEAL RING 170X200X15 BASL
38	427005300	2	THICKNESS SHIM ADJUSTMENT 110X140X1 DIN988
39	410101800	3	SCREW TSPEI M14X30 10.9
40	02371054	1	REACTION HUB X WINCH SW40 OS
41	410414200	3	HEX SOCKET HEAD CAP SCREW M14X35 12.9 GEOMET 500B
42	02551126	1	CLOSING ROD END PLATE ARG.SW40 OS
43	02371055	1	REACTION ROD X WINCH SW40 OS
44	415007900	1	OIL SEAL 110X130X12 BASL
45	406060200	1	V-RING NBR VA 140
46	410422200	16	SCREW TCEI M18X80 12.9 GEOMET 500B
47	02331062	1	GEARBOX SIDE FLANGE X WINCH SW40 OS
48	025310166	1	INTEGRAL REACTION ARM
49	026010542	1	LOAD LIMITER PIN WINCH SW55 JO
50	421009300	2	SHAFT SEEGER Ø32 INOX



Pos	Code	Qty	Description
51	427006000	6	THICKNESS SHIM ADJUSTMENT 32X45X1 DIN 988
52	410044000	2	HEX SOCKET HEAD CAP SCREW M12X20 12.9 UNI 5931
53	423108600	6	WASHER 12,5X36X3 UNI 6593 INOX A4
54	024910323	2	LOAD LIMITER SUPPORT PLATE
55	024510465	2	CROSS MEMBER FOR LOAD LIMITER WINCH SW55 JO
56	410418700	10	HEX SOCKET HEAD CAP SCREW M10X30 12.9 GEOMET 500B
57	02941052	1	RING GEAR
58	434011400	6	ELASTIC PIN Ø16X60 UNI 6873
59	026110177	1	SUN GEAR R=1:5,2 RE 2520 X RE 1020
60	02611125	1	SUN GEAR R=1:6.85 RE 1020
61	2030032200	1	SUN GEAR 2°STAGE R 7,5 RE 510

825503003Q-2	Winch	SW 55 JO
	Logbook code	825503003Q

Pos	Code	Qty	Description
73	024510464	2	ROUND INTERMEDIATE RAIL SW55 JO
74	444012600	1	LOAD LIMITER SIEMENS A-H-100107



905550100

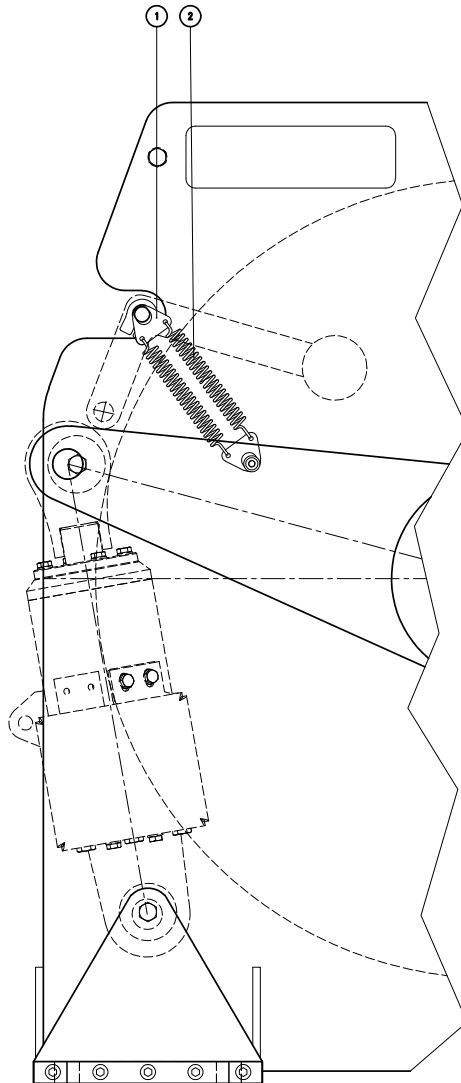
Winch

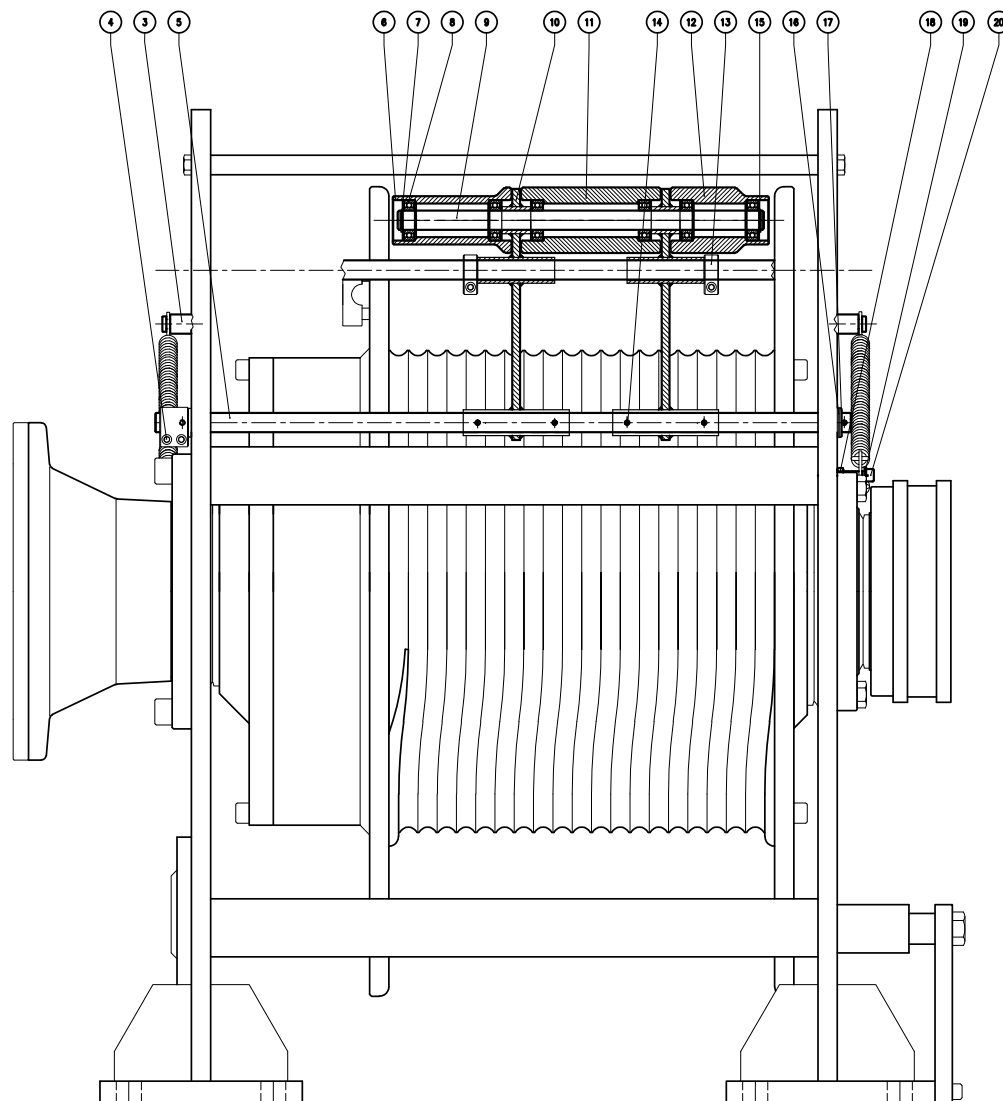
SW 55 JO

Logbook code

825503003Q

Pos	Code	Qty	Description
1	02490296	4	SPRING PLATE I=23
2	418206100	2	SPRING DIM T43070 INOX





Pos	Code	Qty	Description
3	02601622	1	Ø20X750 SPRING PIN
4	02981308	2	SCREWS+BOLT KIT M6
5	026010543	1	PIN CABLE PRESS INOX SW55 JO
6	010105214	1	DISCHARGED ROLLER L107 Ø68X123 PLA6
7	423010600	6	NYLON WASHER Ø21X41.5X1
8	400011600	6	BALL BEARING 6004 2RS TYPE B
9	026010541	1	ROLLER PIN Ø20X380
10	029917182	2	CABLE PRESS ARM TYPE 15 INOX
11	010105308	1	CENTRAL ROLLER
12	010105346	1	DISCHARGED ROLLER L25 Ø68X102 PLA6
13	029813102	2	NYLON CLAMP GROUP Ø20
14	434010900	5	ELASTIC PIN Ø 5X30 UNI6873 INOX
15	421005700	2	CLIP RING DIA 20 MM INOX
16	423010500	3	NYLON WASHER Ø20.2X31.5X1
17	423203800	2	WASHER Ø21 UNI6592 INOX SHIM 3
18	413002900	2	NUT M8 UNI 5588 INOX A2-70
19	423109700	2	FLAT WASHER Ø8.4X17X1.6 INOX
20	410151300	2	SCREW TCEI M8X50 A2-70 (INOX)

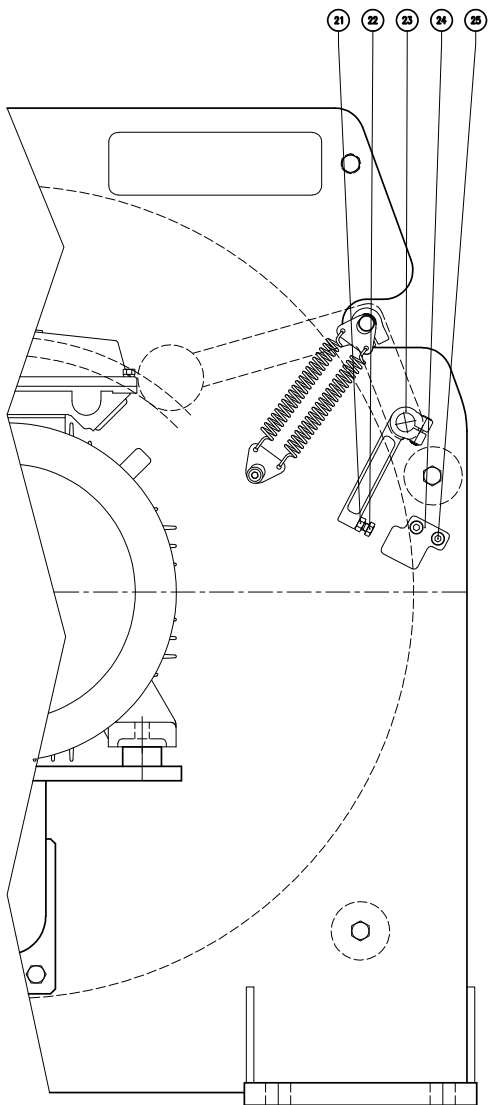
905550100-2

Winch

SW 55 JO

Logbook code

825503003Q



Pos	Code	Qty	Description
21	413002900	1	NUT M8 UNI 5588 INOX A2-70
22	410025700	1	HEX HEAD SCREW M8X25 INOX A2-70
23	01020002	1	END STROKE LEVER (SHORT) NYLON 6
24	01020003	1	MICROSWITCH SUPPORT PLATE
25	410150600	2	HEX SOCKET HEAD CAP SCREW M8X20 INOX A2-70

Pos	Code	Qty	Description
1	409801	1	MICROSWITCH FR501-V9
2	460100900	1	REDUCTION MF PG13,5-PG7 RTG 86782
3	460100400	1	FIXED MALE CONNECTOR PG7 RTG84310
4	410085000	1	HEX SOCKET HEAD CAP SCREW M4X40 INOX A2-70
5	423106700	2	CHAMFERED WASHER Ø4 UNI 1750 INOX

