



Spare parts catalogue

**Winch
SE45V**

DINAMIC OIL S.p.A.

Via Togliatti, 15
41030 Bomporto (MO)
tel +39.059.812611
fax +39.059.812603
dinamicoil@dinamicoil.it

Spare parts catalogue No.

L212

Logbook code

93451028FJ

Edition

10/01/2014

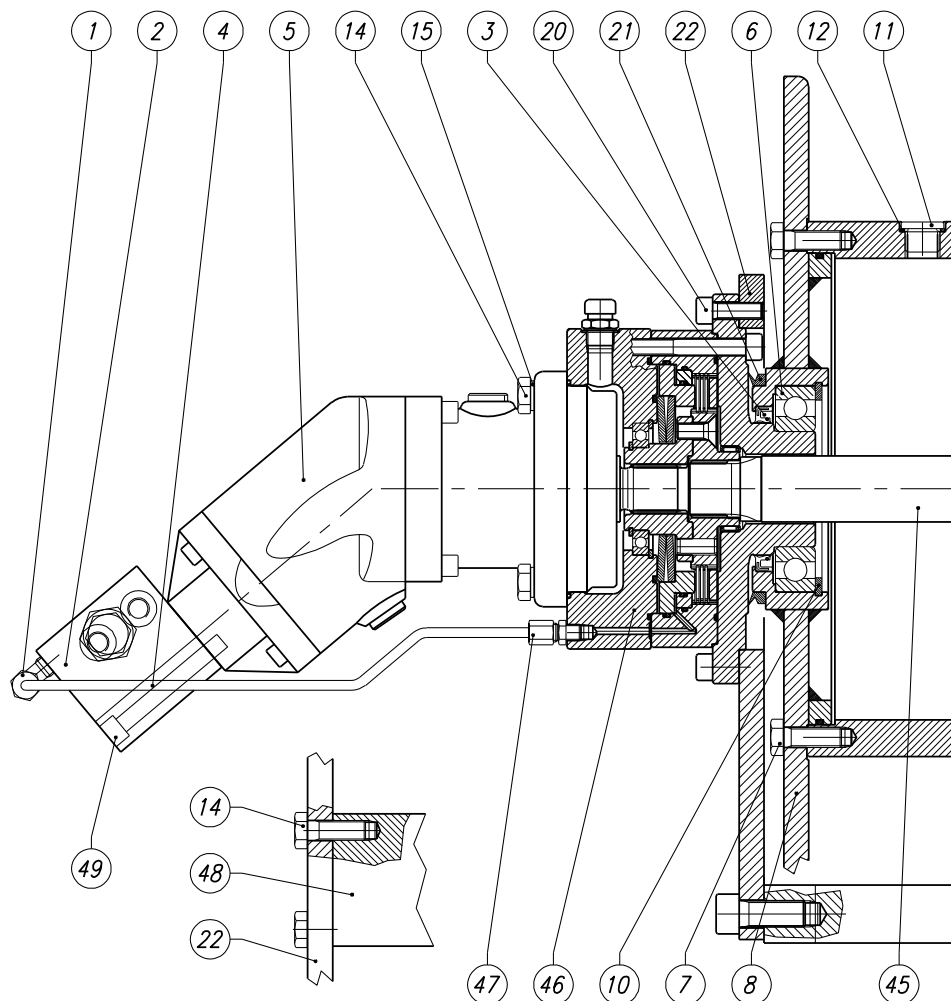
Revision

0

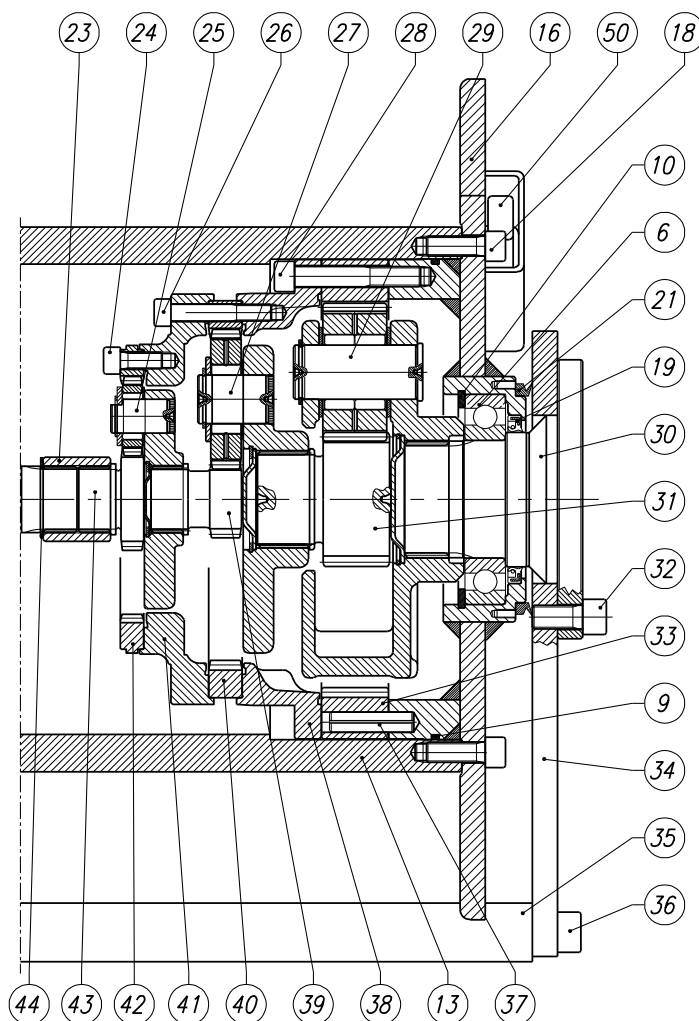


Table index	<i>Winch</i>	SE45V
	<i>Logbook code</i>	93451028FJ

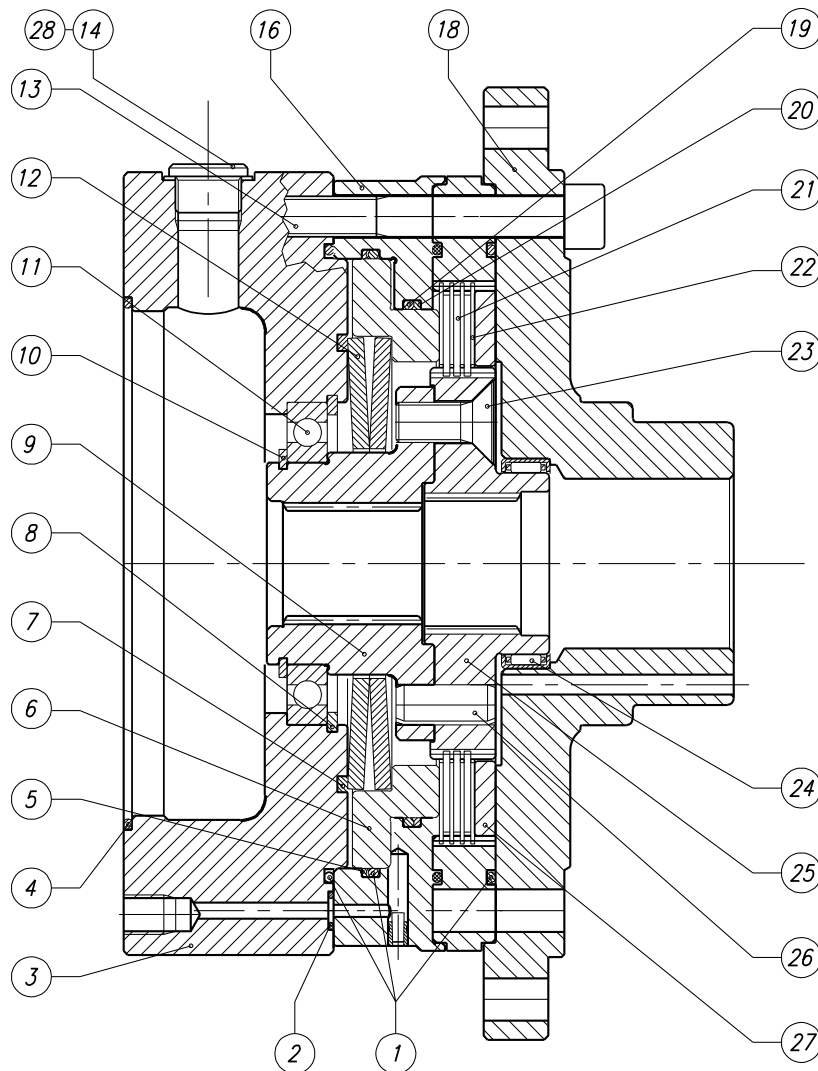
Page	Table code	Table heading
3	93451028FJ-1	WINCH SE45V FH DX L.F.17 SUN.47 SLM
4	93451028FJ-2	WINCH SE45V FH DX L.F.17 SUN.47 SLM
5	029810123	BRAKE GROUP SE45V (H2V55)
6	905000304-1	COMPLETE HYDRAULIC KIT X WINCH SE60 SUNFAB
7	905000304-2	COMPLETE HYDRAULIC KIT X WINCH SE60 SUNFAB
8	905455000-1	CABLE PRESS PREARRANGEMENT KIT UNIFIC.SE45
9	905455000-2	CABLE PRESS PREARRANGEMENT KIT UNIFIC.SE45
10	905455000-3	CABLE PRESS PREARRANGEMENT KIT UNIFIC.SE45



Pos	Code	Qty	Description
1	440000200	3	CONICAL CONNECTOR 90° 1/4"G Ø6 PIPE
2	438043000	1	VALVE VOC 190 G.FLUID HYDRAULIC END STROKE
3	415009700	1	SEAL RING 80X100X10 BASL
4	02671053	1	BRAKE PIPE SE30-35-40-45
5	425013700	1	MOTOR SUNFAB SCM047WH-I43-W30-S2-M-1-00
6	400001600	2	BALL BEARING 6214 TYPE B
7	410033400	8	HEX HEAD CAP SCREW M12X35 10.9 UNI 5739
8	02321080	1	MOTOR SIDE FLANGE FOR WINCH SE45 (CAST IRON)
10	421102700	2	HOLE SEEGER Ø125
11	419000800	1	CYLINDRICAL PLUG 1/2"GAS PLUG DIN 908
12	423000700	2	SOFT COPPER WASHER 1/2" 21X27X2
14	410033400	12	HEX HEAD CAP SCREW M12X35 10.9 UNI 5739
15	423100300	4	CHAMFERED WASHER D.12,5 SP.2,5
20	410001500	8	HEX SOCKET HEAD CAP SCREW M10X30 8.8 UNI 5931
21	406060100	2	V-RING NBR VA 130
22	02340286	1	MOTOR SIDE SUPPORT FOR WINCH SE45
45	02441052	1	DRIVE SHAFT SE30-SE45
46	029810123	1	BRAKE GROUP SE45V (H2V55)
47	440001000	1	STRAIGHT CONNECTOR 1/8"G CONICAL Ø6 PIPE
48	02451272	2	CROSS MEMBER WINCH SE45
49	410002100	8	HEX SOCKET HEAD CAP SCREW M10X80 8.8

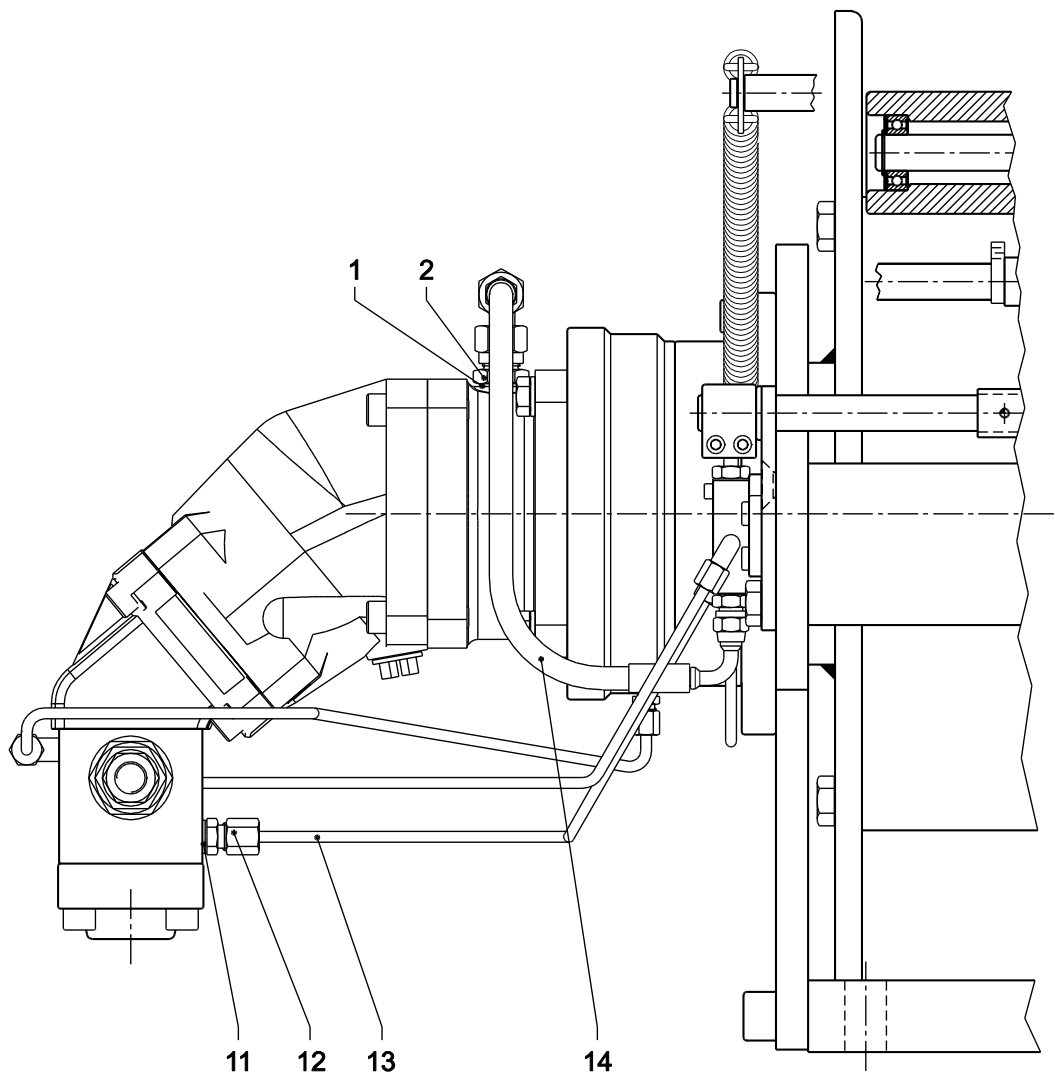


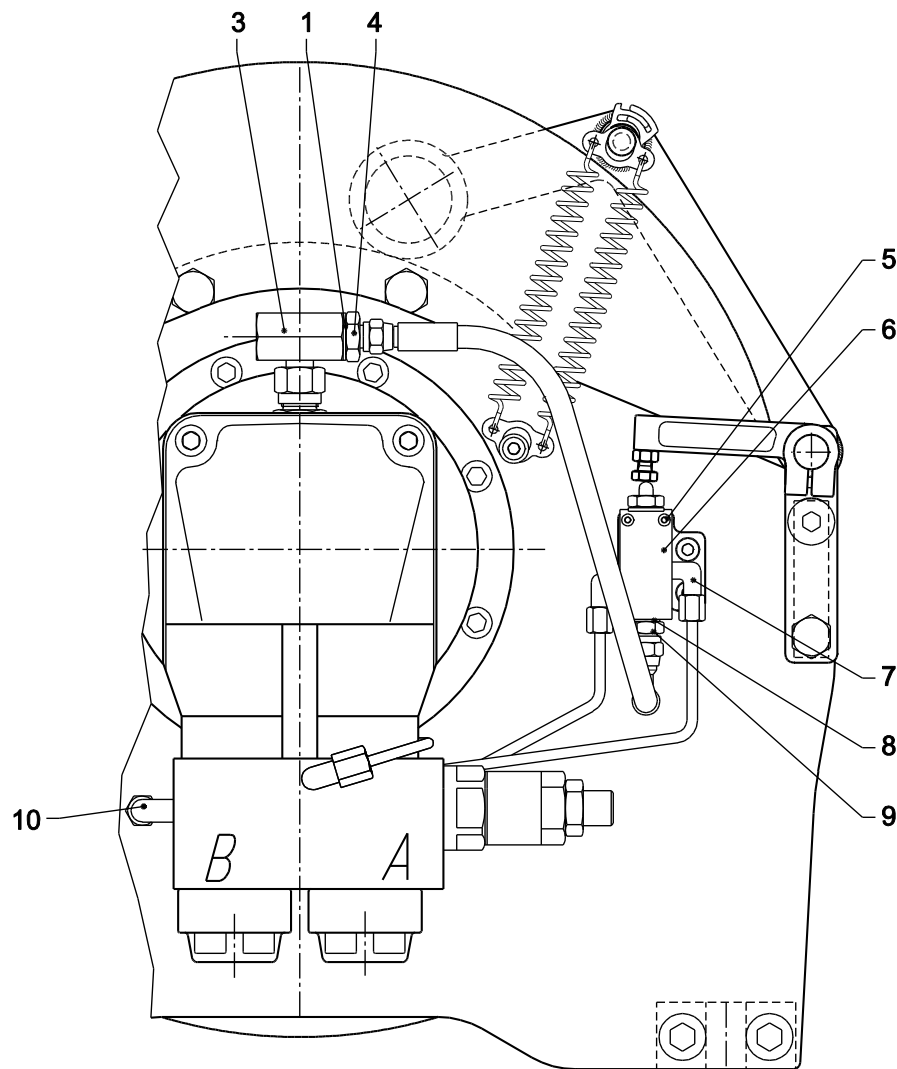
Pos	Code	Qty	Description
6	400001600	2	BALL BEARING 6214 TYPE B
9	406023000	2	O-RING 2-275
10	421102700	2	HOLE SEEGER Ø125
13	02301034	1	SMOOTH DRUM SE45
16	02321061	1	GEARBOX SIDE FLANGE S45
18	410400700	8	HEX SOCKET HEAD CAP SCREW M12X35 12.9
19	415002500	1	SEAL RING 80X100X7/8 BABSL
21	406060100	2	V-RING NBR VA 130
23	263200600	1	SPLINED COUPLING SW4 - S45
24	410407000	8	HEX SOCKET HEAD CAP SCREW M10X25 12.9 UNI 5931
25	99102500	1	GEAR SUBASSEMBLY RE 110 N 3,48
26	410410300	12	HEX SOCKET HEAD CAP SCREW M10X60 12.9
27	99106100	1	GEAR SUBASSEMBLY RE 310 R=1:4,25
28	410406900	12	HEX SOCKET HEAD CAP SCREW M12X75 12.9 UNI 5931
29	99117800	1	GEAR SUBASSEMBLY RE 810 R=1:3.5 FOR WINCH
30	02371017	1	ANTIROTATION FLANGE TW4
31	02611030	1	SOLAR GEAR 2ST R=3,56 RE 810
32	410409500	12	HEX SOCKET HEAD CAP SCREW M14X30 12.9 UNI 5931
33	02231011	1	RING GEAR RE810
34	02340287	1	GEARBOX SIDE SUPPORT FOR WINCH SE45
35	02451273	2	FIXING PLATE FOR WINCH SE45
36	410400600	8	HEX SOCKET HEAD CAP SCREW M16X40 12.9 UNI 5931
37	434006700	4	ELASTIC PIN SPIROL Ø12X36 UNI6875
38	02971224	1	INTERMEDIATE FLANGE 510-810 S45
39	2030024000	1	SUN GEAR 2ST R=4,25 RE 310
40	2030021300	1	RE300 RING GEAR
41	2030022400	1	INTERMEDIATE FLANGE RE300-500 FOR RE110/210/240
42	02231006	1	RE110 RING GEAR
43	02611021	1	SUN GEAR 2ST R=1:3.48 RE 110 / '98
44	421000600	1	SHAFT SEEGER Ø40
50	02410224	1	THIMBLE SLM



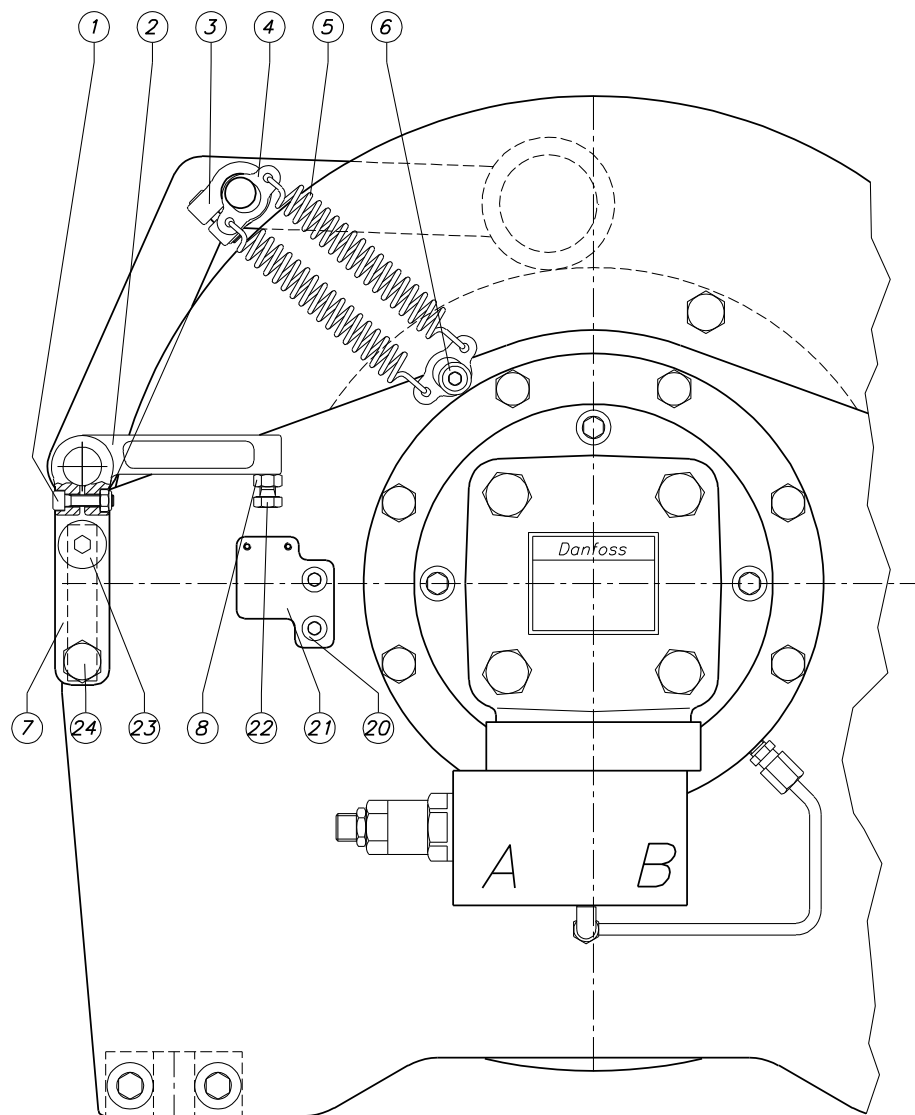
Pos	Code	Qty	Description
1	406016800	3	O-RING 2-163 N 674-70 (PARKER)
2	406001400	1	O-RING 2-010
3	02461053	1	MOTOR FIXING FLANGE TW4-5 SE45V
4	406012500	1	O-RING 2-158
5	415068700	1	ANTIEXTRUSION FLUORTEN T-2306/A
6	02271002	1	BRAKE PISTON S20--->S100
7	415025900	1	SHOULDER RING BR112 FOR HOLE
8	421101500	1	HOLE SEEGER Ø80
9	02631118	1	FLANGED COUPLING SE75 AS
10	421000800	1	SHAFT SEEGER Ø50
11	400004100	1	BALL BEARING 16010 TYPE B
12	416203700	2	DISC SPRING 112X57X4
13	410408000	8	HEX SOCKET HEAD CAP SCREW M10X75 12.9 UNI 5931
14	419000700	1	HEX SOCKET HEAD CAP PLUG DIN 908 R 3/8"GAS
16	029810231	1	THIN BRAKE BODY GROUP WINCH "SW60"
18	02331030	1	CARRIER FLANGE SE20/3-SE30-SE45
19	406016700	1	O-RING 2-159 N 674-70 (PARKER)
20	415068600	1	ANTIEXTRISION RING FLUORTEN T-2307/A
21	415040400	3	SINTERED DISK MIBA 7351104 C SP.1,6
22	415030800	4	STEEL DISK EST. 5" SHIM 1
23	410419000	3	HEX SOCKET HEAD CAP SCREW M10X16 10.9 DIN7984
24	402005500	1	ROLLER BEARING HK 4512
25	02241003	1	BRAKE DISK GEAR S20--->S100
26	434017100	3	ELASTIC PIN Ø10X24 UNI6873
26	434017200	3	ELASTIC PIN Ø6X24 UNI6873
27	02731034	1	COMPENSATION DISK SP 5,2
28	423000600	1	SOFT WASHER COPPER 3/8" UNI 6953

Pos	Code	Qty	Description
1	423000700	2	SOFT COPPER WASHER 1/2" 21X27X2
2	442031800	1	NIPPLE MM 1/2"G INOX + WASHER NBR
11	423000300	1	SOFT COPPER WASHER 1/4" 13X19X1.5
12	442030200	1	STRAIGHT CONNECTOR 1/4"G Ø6 INOX+WASHER NBR
13	5905450	1	PIPE FOR HYDRAULIC CIRCUIT Ø6X1 INOX
14	443005100	1	FLEXIBLE PIPE R1T 1/4"F.DR-1/4"F.90°INOX

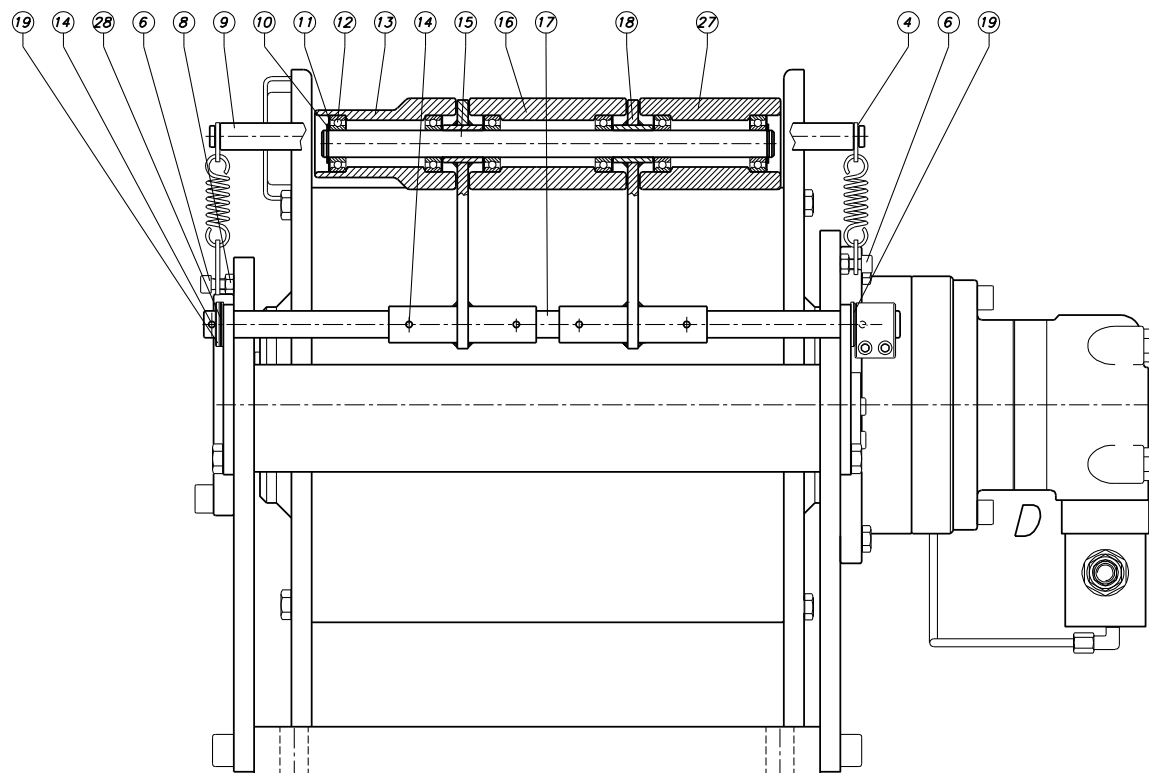




Pos	Code	Qty	Description
1	423000700	2	SOFT COPPER WASHER 1/2" 21X27X2
3	442026300	1	"T" CONNECTOR SWINGING FFF 1/2" GAS
4	442029600	1	REDUCTION MM 1/2"G - 1/4"G
5	410080100	2	HEX SOCKET HEAD CAP SCREW M4X30 INOX A2-70
6	438024800	1	VALVE FOR HYDRAULIC KIT 3V-2P
7	442030500	2	CONNECTOR 90° 1/8" CONICAL PIPE Ø6 INOX
8	423001700	1	SOFT COPPER WASHER 1/8"
9	442029700	1	REDUCTION MM 1/4"G - 1/8"G
10	442030600	1	CONNECTOR 90° 1/4" CONICAL PIPE Ø6 INOX

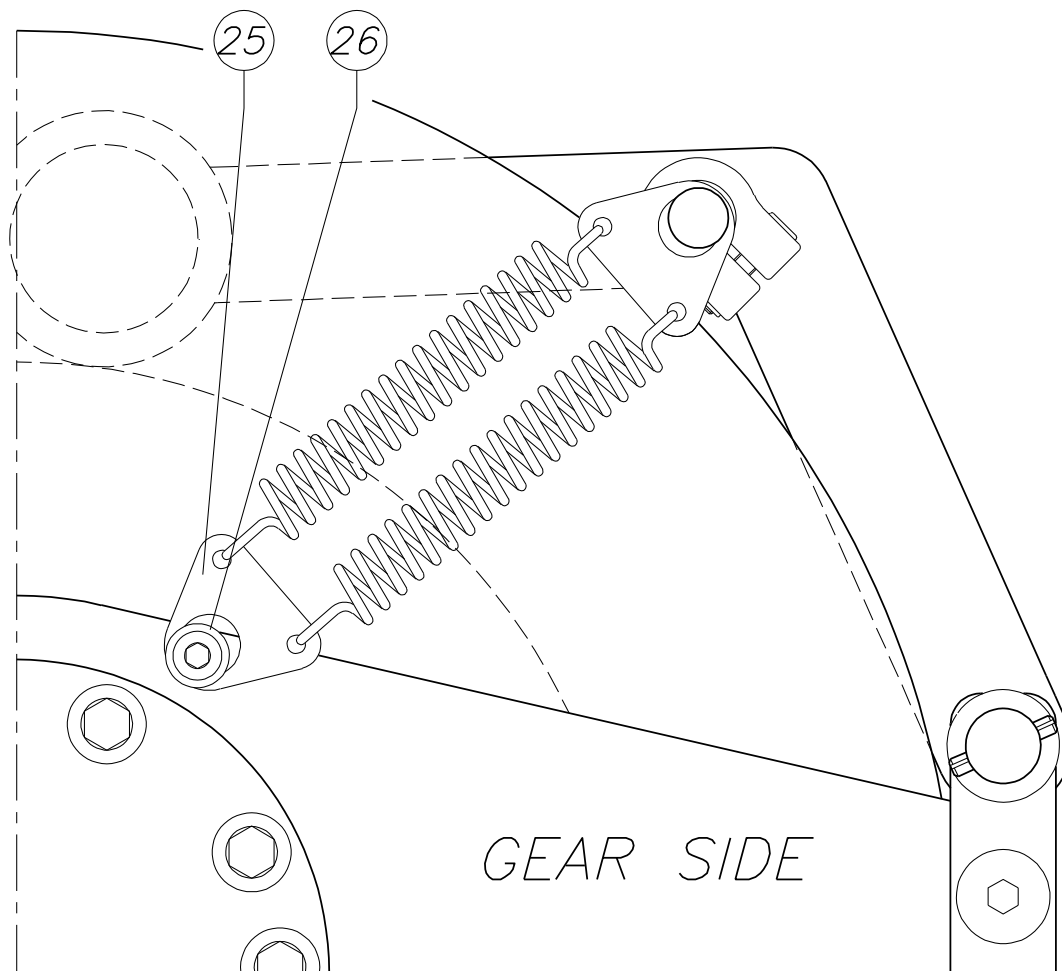


Pos	Code	Qty	Description
1	02981308	1	SCREWS+BOLT KIT M6
2	01020002	1	END STROKE LEVER (SHORT) NYLON 6
3	029813102	2	NYLON CLAMP GROUP Ø20
4	02490285	2	SPRING PLATE I=8
5	418205700	4	TRACTION SPING DIM T42620 INOX
6	410083800	2	HEX SOCKET HEAD CAP SCREW M8X30 INOX UNI 5931
7	02490282	2	INOX CABLE PRESS COUPLING PLAQUE SE45
8	413002900	3	NUT M8 UNI 5588 INOX A2-70
20	410081200	2	HEX SOCKET HEAD CAP SCREW M8X25 INOX A2-70
21	01020003	1	MICROSWITCH SUPPORT PLATE
22	410025700	1	HEX SOCKET HEAD CAP SCREW M8X25 INOX A2-70
23	410105300	2	HEX SOCKET COUNTERSUNK HEAD CAP SCREW M12X40 10.9
24	410028300	2	HEX HEAD CAP SCREW M12X40 10.9 GEOMET 500B



Pos	Code	Qty	Description
4	02490285	2	SPRING PLATE I=8
6	410083800	2	HEX SOCKET HEAD CAP SCREW M8X30 INOX UNI 5931
8	413002900	3	NUT M8 UNI 5588 INOX A2-70
9	02601591	1	SPRING PIN Ø20X488
10	421005700	2	SHAFT SEEGER Ø20 INOX
11	423010600	6	NYLON WASHER Ø21X41.5X1
12	400011600	6	BALL BEARING 6004 2RS
13	010105248	1	DISCHARGED ROLLER L60 Ø68X105 PLA6
14	434010900	5	ELASTIC PIN Ø 5X30 UNI6873 INOX
15	02601648	1	CABLE PRESS Ø20X337 ROLL PIN STANDARD
16	01010584	1	CABLE PRESS ROLLER Ø68X117 ERTALON 6 PLA
17	02601649	1	CABLE PRESS PIN UNIFIC. INOX SE45
18	029917184	2	CABLE PRESS ARM TYPE 18 INOX
19	423203800	2	WASHER Ø21 UNI6592 INOX SHIM 3
27	010105106	1	CABLE PRESS ROLLER Ø68X105 ERTALON 6 PLA
28	423010500	6	NYLON WASHER Ø20.2X31.5X1

Pos	Code	Qty	Description
25	02490296	2	SPRING PLATE l=23
26	423109700	2	FLAT WASHER Ø8.4X17X1.6 INOX



**600012600 – SEAL KIT***Winch***SE45V***Logbook code***93451028FJ**

ITEM	CODE	QTY	DESCRIPTION
2	415009700	1	SEAL RING 80X100X10 BASL
8	406023000	2	O-RING 2-275
11	423000700	1	SOFT COPPER WASHER 1/2" 21X27X2
19	415002500	1	SEAL RING 80X100X7/8 BABSL
48	406014300	2	O-RING 2-123 (O-RING3118)
102	406001400	1	O-RING 2-010
103	406016800	4	O-RING 2-163 N 674-70 (PARKER)
104	415068700	1	ANTIEXTRUSION FLUORTEN T-2306/A
116	415068600	1	ANTIEXTRISION RING FLUORTEN T-2307/A
126	406016700	1	O-RING 2-159 N 674-70 (PARKER)
127	406012500	1	O-RING 2-158